



I <sup>2</sup> t				220Vac 25 10%-10% = 176 μs ;
	0.90	-	-	100~ 277Vac 75% ~ 100%
	-	-	20%	

				100%
				100%
				120Vac 100%
				220Vac 100%
		°		= 0°C ~ Tc
12V Vaux				
12V Vaux				60% ~ 100% " Dim - "
				50% ~ 60% " Dim - "

25°C

				100% 25 .
				100% 25 .
				120 Vac 25 80% (MIL-HDBK-217F)
				120 Vac 80% 60
				: 10% RH to 90% RH
				: 5% RH to 90% RH
(L × W × H) (L × W × H)	4.72 × 1.65 × 1.20 120 × 42 × 30.5			
		200 g	-	

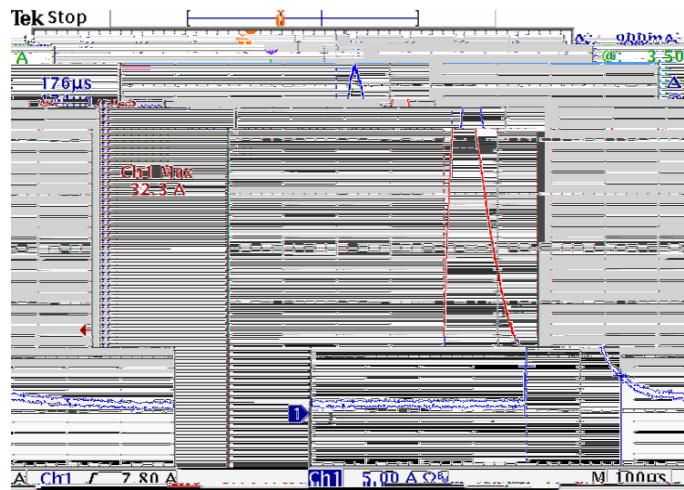
25°C

	μ	μ	μ	

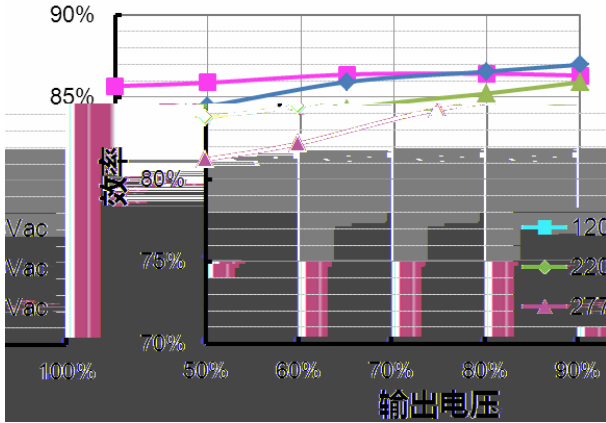
EMI	
EMS	

1 EMI

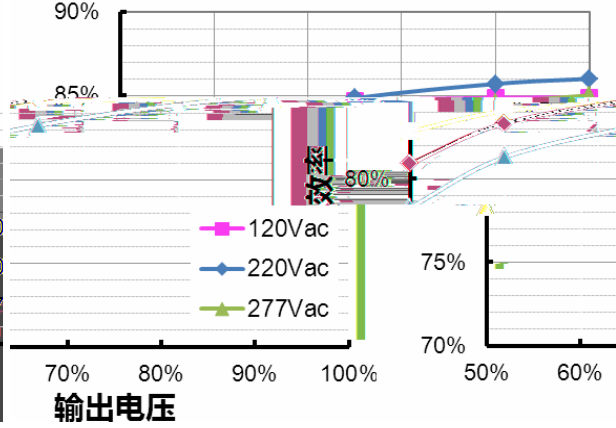
( ) EMI



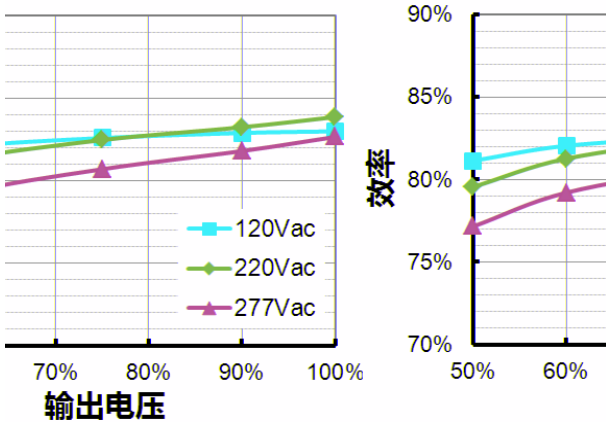
LUC-018S035DSP(SSP)  
效率 vs. 输出电压



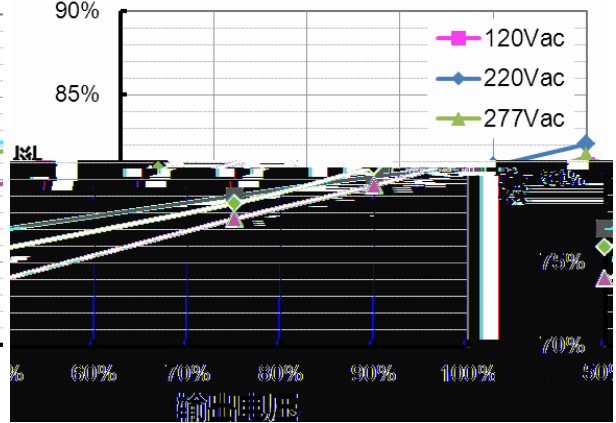
LUC-018S050DSP(SSP)  
效率 vs. 输出电压



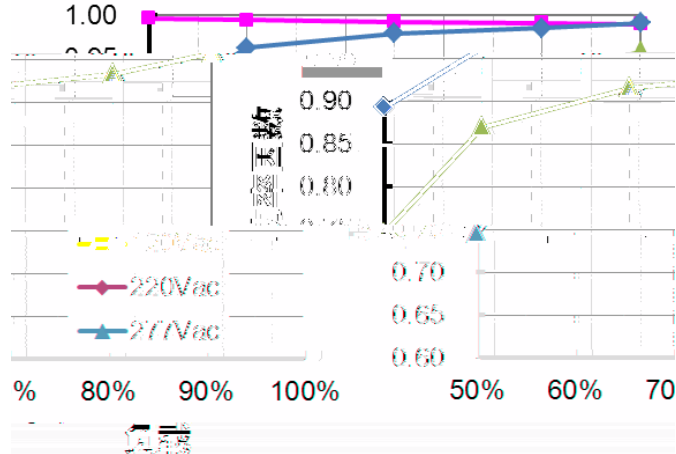
LUC-018S070DSP(SSP)  
效率 vs. 输出电压



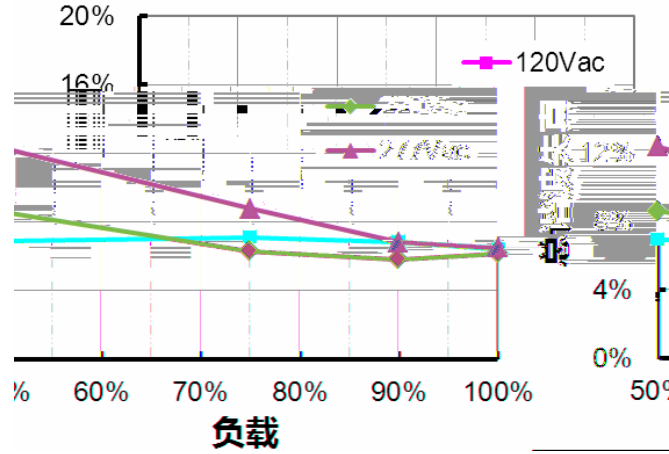
LUC-018S105DSP(SSP)  
效率 vs. 输出电压



功率因数 vs. 负载

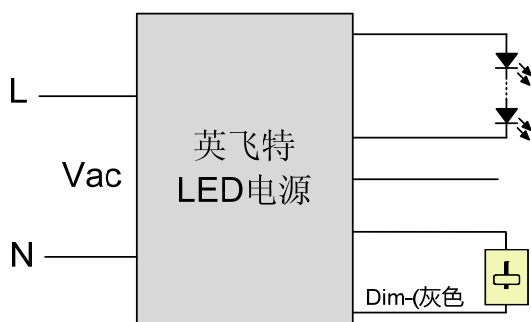


总谐波失真 vs. 负载

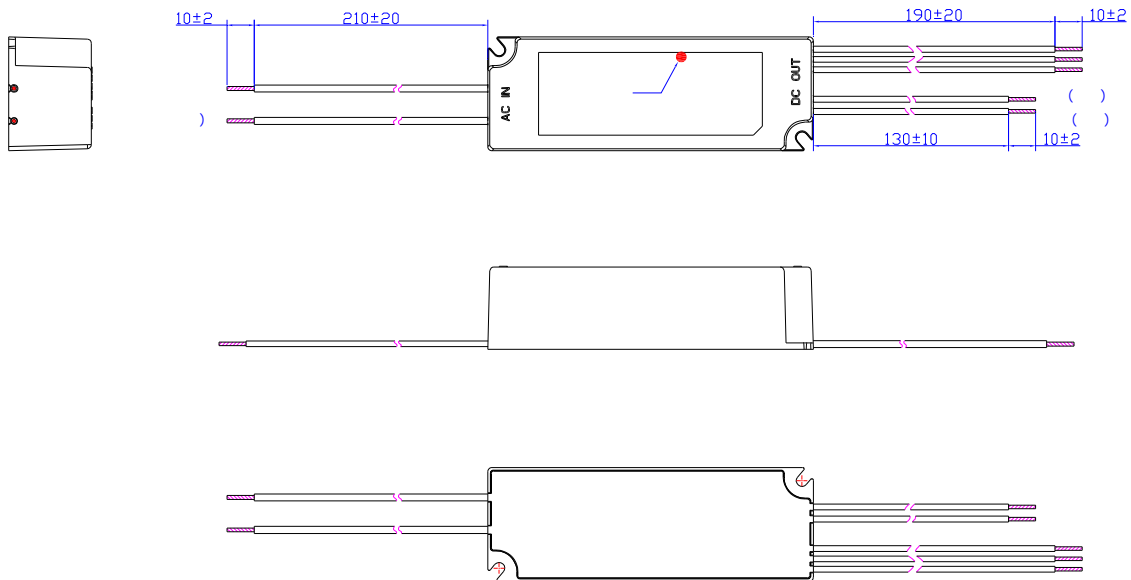



**0-10V**

0~10V



## LUC-018SxxxDSP





RoHs

2011/65/EC

2012-4-1	A		/	/
2012-7-17	B		/	
		12 Vaux		
			/	
2012-8-2	C		/	
			/	
2012-9-10	D	I <sup>2</sup> t	/	
		PF	/	
		THD	/	
			/	
2013-08-22	E		60%	50%
		-12V Vaux	/	
		-	/	
2015-08-11	F	- -		
			/	
			/	
			/	
			/	
		¾ •	/	
		/	/	
	/			

+

+

Z

2017-07-07	G	@ 120Vac	= 1.0 s	= 0.75 s
		@ 220Vac	= 0.8 s	= 0.6 s
		EMI	/	